



The GEOS Locator is THE compact protection surveillance and alarm device

Pressing the dedicated alarm button instantly sends an SOS message, together with your exact GPS location details, to the GEOS Command & Control Centre. The Locator voice channel allows the GEOS Command & Control Center to listen in and monitor events as they unfold.

Locator is a newly developed, small and light GPS/GSM unit. Locator has been designed in collaboration with the foremost specialists in the GPS/GSM field and includes the most modern technology on the market. Locator is intended for several areas of use such as surveillance, personal protection as well as theft protection and tracking of cars, vehicles and boats.

Areas of use

Locator is adapted and intended for several areas of use:

Theft and burglary alarm

- Personal protection
- Personal surveillance
- Positioning
- Anchor alarm & tracking

Theft and burglary alarm

Locator can be used to send an alarm in case of theft or burglary. The alarm is sent as an SMS to at least two different, selectable phone numbers. The SMS contains alarm information about the object and if the object is moving information about position, direction and speed can be obtained. You can also call the Locator and listen-in.

Personal protection

If Locator is used for personal protection there are several different applications. When the panic button is pressed, information about position, direction and speed is sent immediately and one way communication is established.

- The Locator can be carried completely hidden
- External alarm button can be connected
- Vibrating notification when alarm is successfully delivered
- You can always call the Locator to make a functioning control and get the position
- Position can be requested at any time

Position surveillance of vehicles and boats

The Locator can be used for position surveillance of vehicles e.g. cars, caravans, machinery and boats. The Locator is hidden in the vehicle and is activated for automatic alarm transmission if the vehicle is moved more than e.g. 50 meters (Anchor Alarm). When the vehicle is moving you can receive continuous information about position, direction and speed.

Mechanics

The Locator is built shock proof in conformity with IP54 standard. On the upper part of the casing there are three buttons and three LED's. For external connections there are two jacks and the following can be connected.

- Shock proof case
- Water proof (IP54)
- Three press buttons
 - Power on/off; Panic; Anchor
- Mini USB connector:
 - for programming; for external buttons
- Indicator LED's:
 - GSM; GPS; Battery

Brief technical specification

- Dimensions: 26mm x 45mm x 75mm
- Weight: approx. 100g inc. battery
- Tri-band GSM (900/1800/1900) unit
- Built-in GSM and GPS antennas

Battery

Standard battery Li-ion 1000 mAh

Stand-by time up to 120hrs

GPS op. time up to 30hrs (1 position/hr)

Charging time <2hrs for 100%

GPS

12 channels high performance receiver

Accuracy ~5m, 95% of the time (Open sky)

Acquisition Rate (Open sky, receiver stationary)

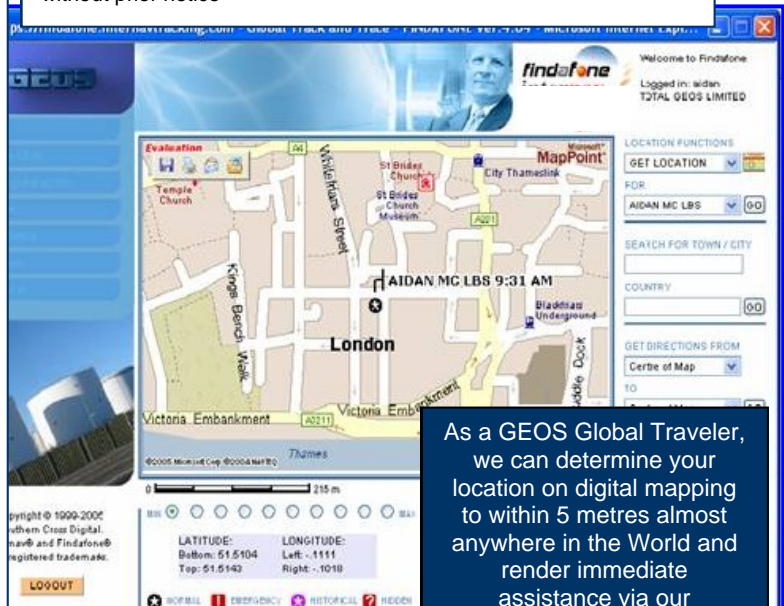
- Cold Start 45sec (typical)
- Warm Start 38sec (typical)
- Snap Start 2-8sec (typical)
- Reacquisition 0.1sec (typical)

Advanced power saving methods

Accessories

- External alarm button
- Car charger
- Belt clip*

There are different versions and some features are subject to local and network conditions, used applications and used GPS performance. GEOS reserves rights to change all this information without prior notice



As a GEOS Global Traveler, we can determine your location on digital mapping to within 5 metres almost anywhere in the World and render immediate assistance via our Command & Control Centre

The GEOS Locator is manufactured for GEOS by
BENEFON of Finland
www.geosalliance.com